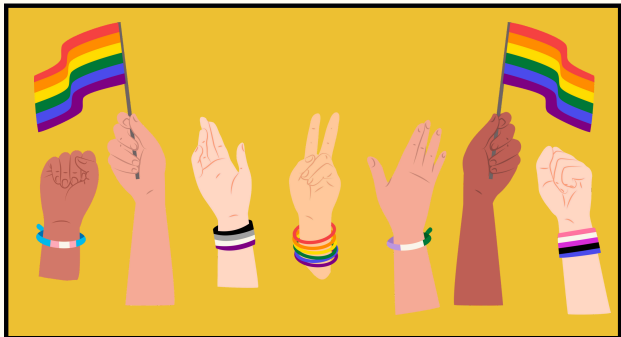


Love Thy Neighbor!



WHY CHURCH INCLUSIVITY IS IMPORTANT!



HISTORY

The word “homosexuality” did not appear in any translation of the Bible until 1946 (Reggio 1946: *The Mistranslation That Shifted a Culture*).

MENTAL HEALTH

LGBTQ+ suicide rates are notably higher among those who are affiliated with religion compared to those who aren’t (Gibbs and Goldbach).



AFFIRM, NOT JUST WELCOME

Many LGBT-identifying individuals recall leaving the Christian faith completely due to ostracism from the community.

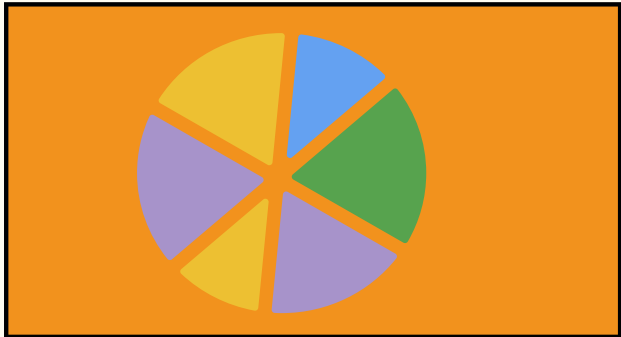
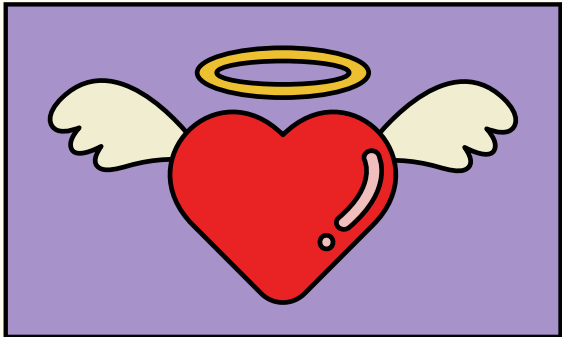


GOD KNEW US IN THE WOMB

Most LGBT-identifying people believe God made them to be so, as He knew us in the womb when He created us (Psalms 139 13-14)!

THE BIBLE TELLS US TO!

Romans 15:7, “Therefore welcome one another as Christ has welcomed you.”



YOU CAN BE BOTH!

In 2013, 42% of LGBT-identifying adults also identified as Christian in multiple denominations (A Survey of LGBT Americans).

WHAT YOU CAN DO!

- Talk to your pastor!
- Talk to your friends!
- Spread awareness!

